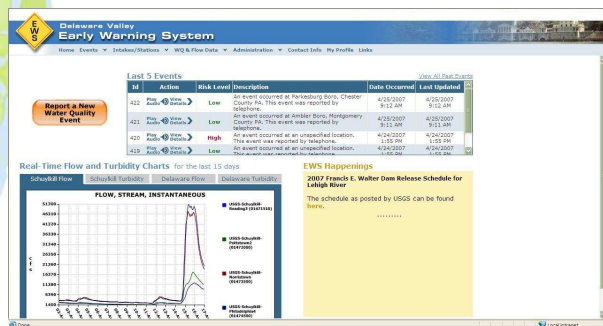
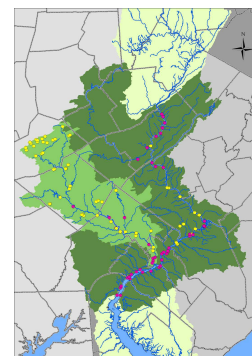


# Delaware Valley Early Warning System

## Reporting Project

## Multiple Watersheds



**Contact:** Phil Duzinski  
215-685-4876  
Phil.Duzinski@phila.gov

**Status:** Ongoing Initiative

### Partners:

- Aqua America
- Delaware River Basin Commission (DRBC)
- NJ American Water
- PA American Water
- Trenton Water Works
- U.S. Coast Guard

- County Health Departments
- Environmental Protection Agency (EPA)
- NJ Department of Environmental Protection (NJDEP)
- PA Department of Environmental Protection (PADEP)
- Twelve Municipal Water Authorities
- United States Geological Survey (USGS)

### Delaware Valley Early Warning System...

The Delaware Valley Early Warning System (EWS) is an integrated monitoring, communication, and notification system used to provide advanced warning of water quality events to water suppliers and industrial intake operators in the Schuylkill and Delaware River watersheds. The EWS was initially deployed in 2004 and by 2008 has grown to include over 250 users in 47 different organizations within the EWS coverage area. EWS partners include 23 water treatment plants (WTPs) from 12 utilities in Pennsylvania and 5 WTPs from 5 utilities in New Jersey, along with PA DEP, NJ DEP, DRBC, US EPA, USGS, US Coast Guard, County Health Departments, and over 25 industries.

### Benefits:

The EWS provides advanced warning of water quality events, web-based tools for determining proper event response, and a strong partnership between water users and emergency responders in the Schuylkill and Delaware River watersheds.