



# Green Stormwater Infrastructure Maintenance

Schuylkill Action Network  
Stormwater Workgroup 12/2/20

# Agenda Topics

- Why GSI?
- GSI Maintenance Overview
- Inspections
- Managing Deficiencies
- Rain Gardens
- Case Studies





# Green Stormwater Infrastructure

- What is GSI?
- What makes GSI successful?
- Standardization
- Funding



## One Size Doesn't Fit All

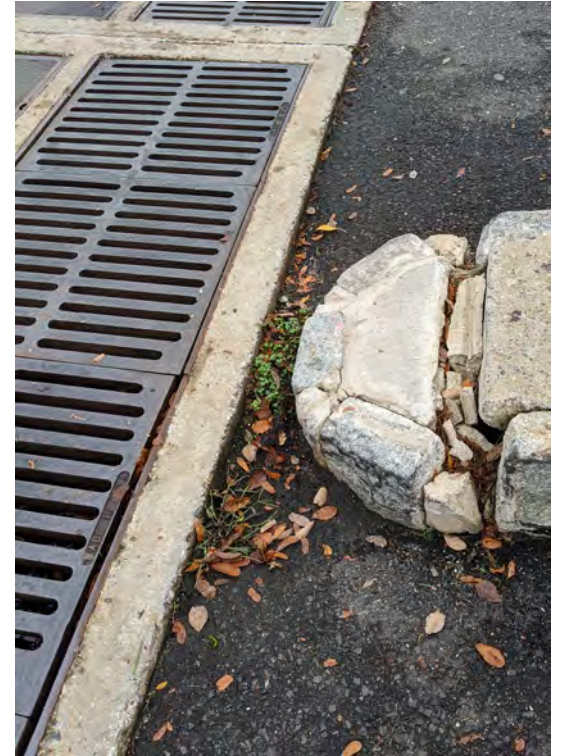
Maintenance tasks and frequency depend on the type of GSI installed and overall site conditions.



# INSPECTIONS

Most Critical Maintenance Task

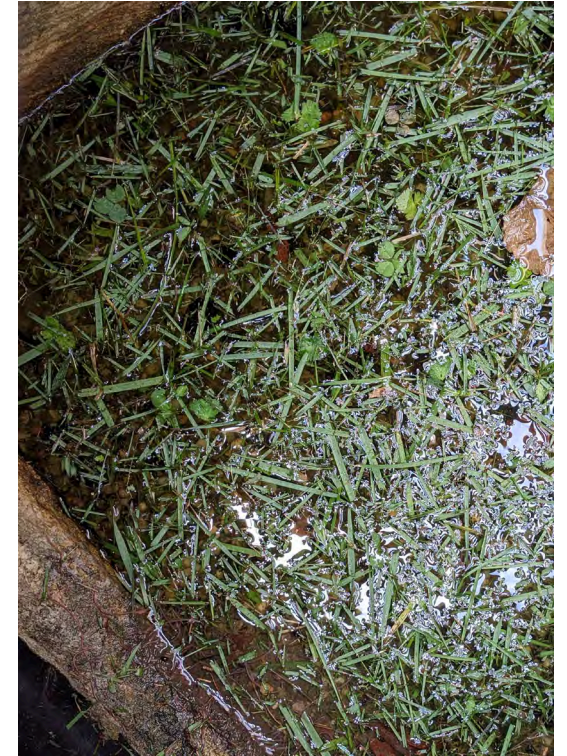
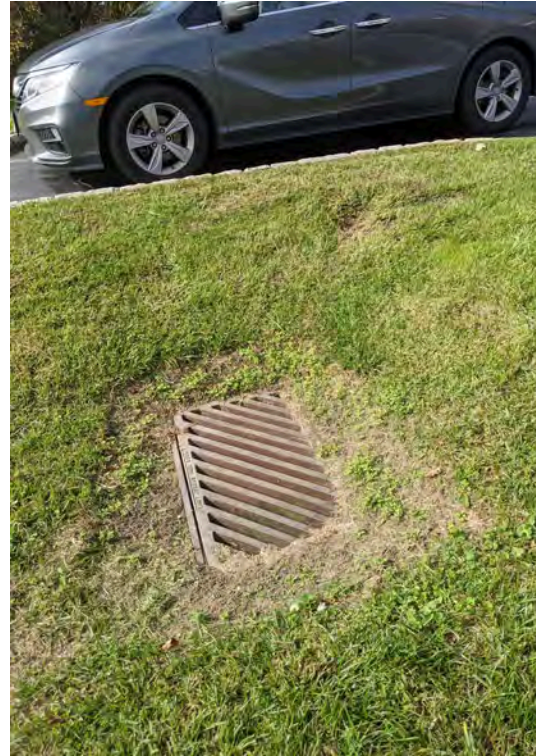
# Example #1 - Sand Filters



## Example #2 - Pretreatment

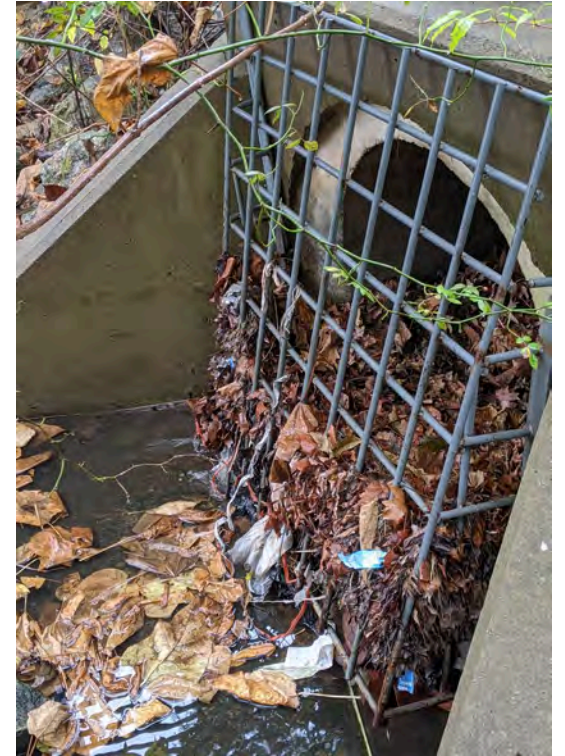
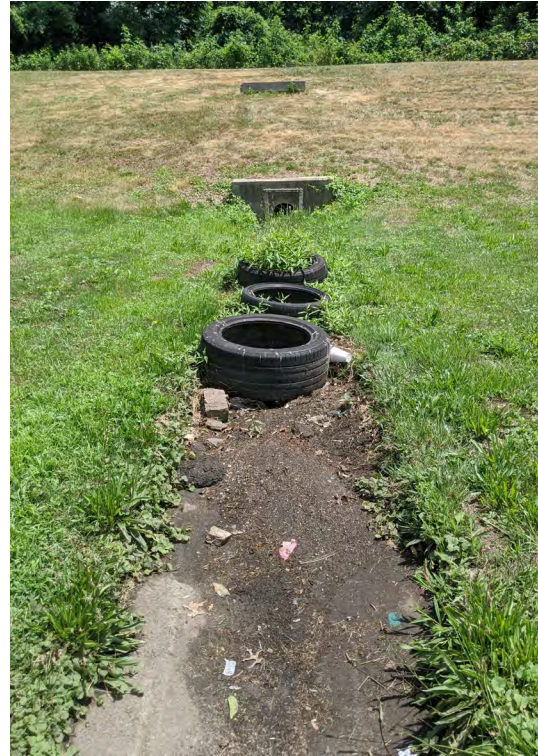


# Deficiencies





# Maintenance Activities



# Maintenance Activities



# Neglect Can Be Costly



# Rain Garden Maintenance

- Plant Health
- Coverage
- Weeds/Invasives
- Mulch
- Erosion
- Sedimentation
- Riprap
- Overflow
- Pests





## CASE STUDY #1 – RAIN GARDEN



PRE-MAINTENANCE



POST-MAINTENANCE



CASE STUDY #2 - RAIN GARDEN/PERMEABLE CONVERSION





# PERMEABLE CONVERSION PROJECT

Demo



# PERMEABLE CONVERSION PROJECT

What could go wrong...?



# PERMEABLE CONVERSION PROJECT

First Test



# PERMEABLE CONVERSION PROJECT

Current



Kate Henry  
Emerald Green Infrastructure LLC

khenry@eginfrastructure.com  
267-400-6550